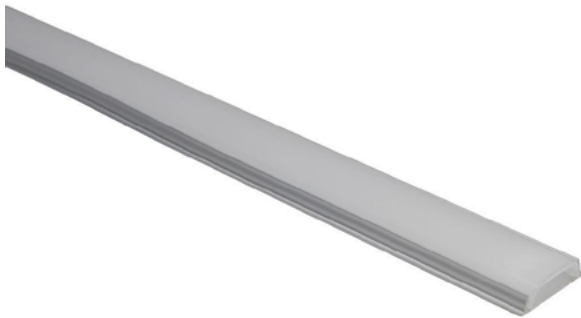


LED Flexible Aluminum Mounting Channels

SPECIFICATION SHEET

ST-H043



Applications:

Exhibit & Display, Commercial, or Residential Lighting Control

Features:

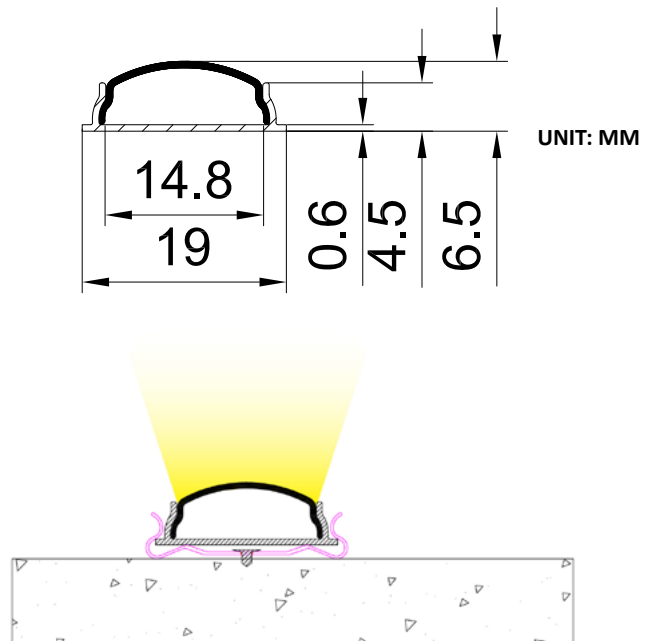
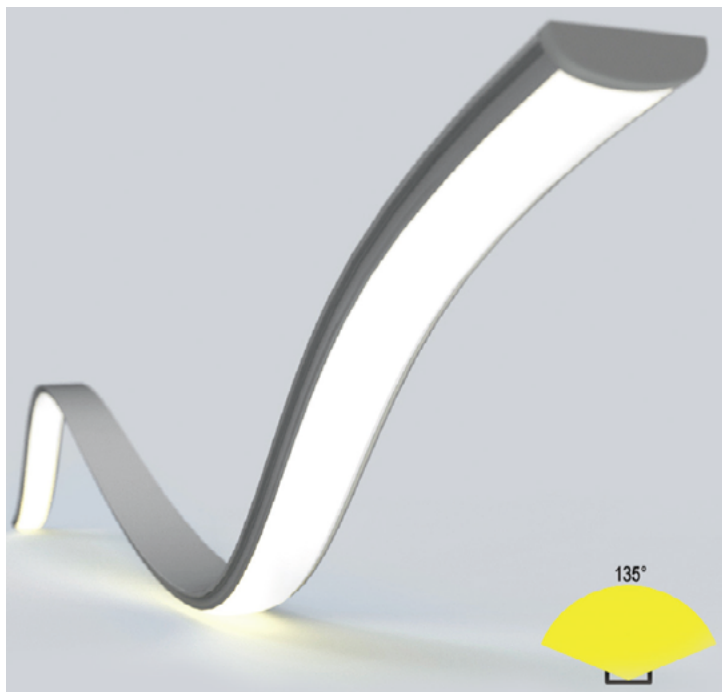
- Aircraft Grade Aluminum Channel
- Flush, Sleek, and Modern Style
- Lightweight and Sturdy Aluminum
- Easy Installation

Description:

LED Flexible Aluminium Mounting Channels protect and provide better light diffusion for indoor LED tape light applications. The channels provide a rigid, dustproof housing that can be mounted on almost any type of Flat or Curved Lighting application. It can be custom cut, and bendable, as well as mounted end to end to any total length available. The lightweight and sturdy aluminum mounting channel are available in 79" section. It can help to create a flush, sleek, and modern style for completely customized LED tape lighting applications. The unique mounting channel track design can be installed easily. Small adjustments to the aluminum channel position can be made after installation. Channel lens is easy to install: simply clip the lens into the mounting channel.

Specification:

- Channel Length: 79"
- Channel Width: 0.75" (19 mm)
- Channel Height: 0.26" (6.5 mm)
- Environment: Dry Location IP20
- Finish: Aircraft Grade Aluminium
- Included items:
 - 2 Channel End Caps ST-H43EC
 - 2 Metal Mounting Clips ST-H43MB
 - 1 Frosted Lens Diffuser (79")



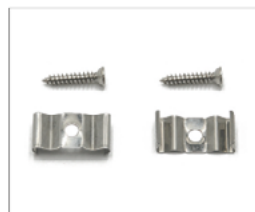
Aluminum Profile



Alu Profile (Back)



End Cap



Mounting Clip (metal)



Application