

# LED LINEAR SLIM ARM LIGHT

SPECIFICATION SHEET

STDC153LED



### Description:

The LED Linear Slim Arm Light is equivalent to a 200 watt standard halogen bulb. The fixture emits no heat and is accepted at all trade show venues. Having a lightweight construction, versatile mounting, and pre-wired with an external LED driver for easy installation to your display unit. The LED Linear Slim Arm Light fixture is 24V DC and comes with plug & play 120V LED power supply. The LED Linear Slim Arm Light is the optimal choice for your display and exhibit lighting solutions. Available in Black or Satin Nickel finish.

### Specification:

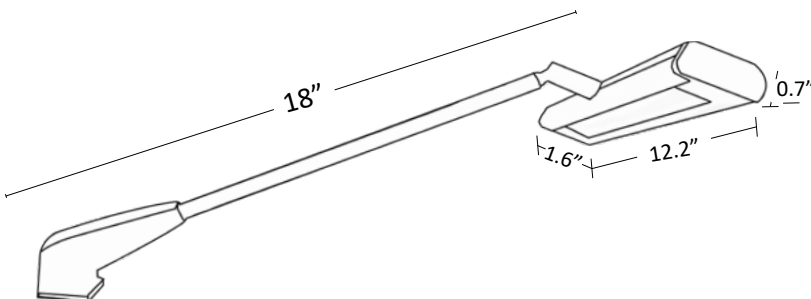
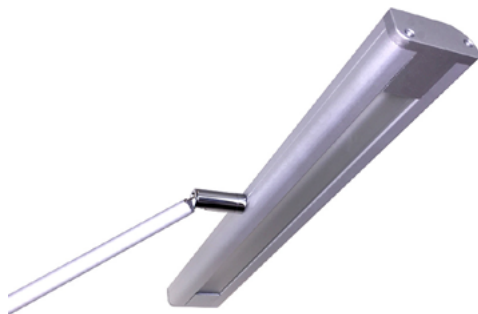
<b>Voltage:</b>	<b>120V AC</b>
<b>Wattage:</b>	<b>16w</b>
<b>Color Temp.:</b>	<b>5000k</b>
<b>Brightness:</b>	<b>1600 Lumen</b>
<b>Light Source:</b>	<b>Integrated LED</b>
<b>Beam Angle:</b>	<b>60°</b>
<b>Brightness:</b>	<b>200 Lumen</b>
<b>Dimmable:</b>	<b>No</b>
<b>Pivots:</b>	<b>At Head 0° - 90° and Rotates 359°</b>
<b>Overall Length:</b>	<b>18"</b>
<b>Head Size:</b>	<b>12.2" L x 1.6" W x 0.7" depth</b>
<b>Lifespan:</b>	<b>± 30,000 - 50,000 hours</b>
<b>Mounting:</b>	<b>Universal base to accept an assortment of mounting options</b>
<b>Environment:</b>	<b>Dry Location IP20</b>

### Applications:

Trade Show Booth, Displays, Exhibit

### Features:

- Energy Efficient LED Chips
- Pivots at head 0° - 90° and rotates 359°
- Universal Base for Easy Mounting options
- 8 Ft Extension Cord with Power Supply Included



### Mounting Options:

<b>STD-20BAR</b> Flat Bar Clip	<b>STD-AG/CL</b> Agam Clip	<b>STD-ANG</b> Angle Clip	<b>STD-OC/CL</b> Octanorm Clip
<b>STD-61</b> Universal Clip	<b>STD-21X</b> Pop Up X Clip	<b>STD-60</b> Pop-Up Adapter	<b>STD-52CL</b> Skyline Clip
<b>STD-51CL</b> 2" Clamp	<b>STD-56CL</b> 1.5" Clamp	<b>STD-53CL</b> 7" Clamp	

